

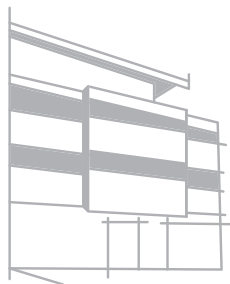
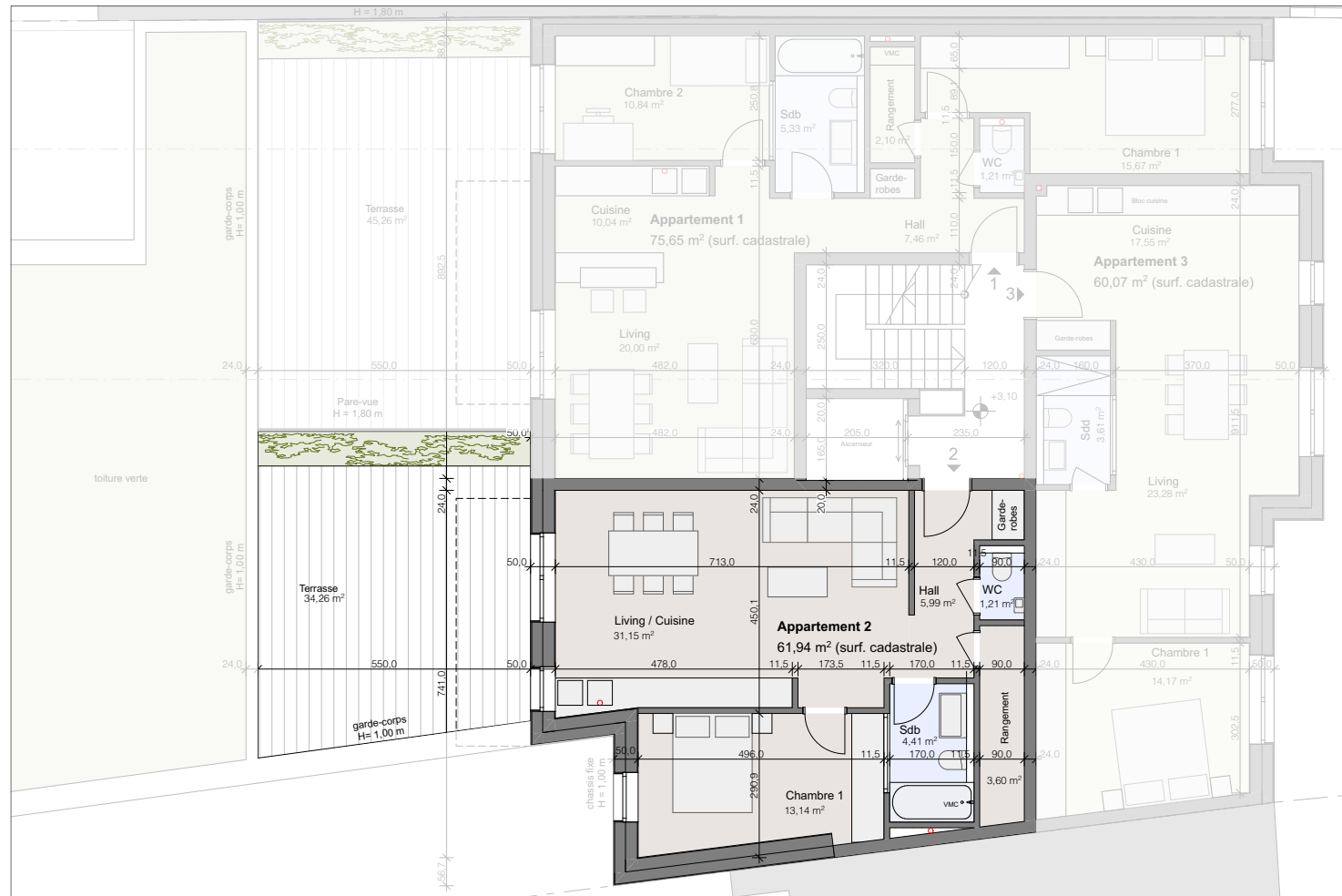
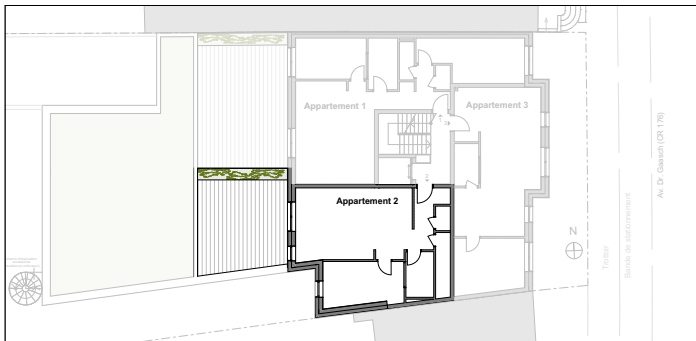
Appartement 2

Etage +1

Surface habitable nette 59,5 m²
(hors balcons/terrasse et cave)

Hall	5,99 m ²
Living / Cuisine	31,15 m ²
Chambre	13,14 m ²
Salle de bains	4,41 m ²
Wc séparé	1,21 m ²
Rangement	3,60 m ²

Terrasse 34,26 m²



IMMEUBLE RESIDENTIEL "Serinus"

20, avenue Dr. Gaasch L-4818 Rodange

TOM SIMON ARCHITECTES

08.06.2021 | Echelle 1/100

17, allée Louis Ackermann | L-1897 Kockelscheuer
T: +352 26 97 62 77 | F: +352 26 97 62 78 | M: info@tsa.lu | W: www.tsa.lu


CKM PROMOTION
IMMOBILIERE

Promotions Immobilières

 **promotions**