

Commerce / Bureaux 1

Rez de chaussée

Surface nette 122,87 m²

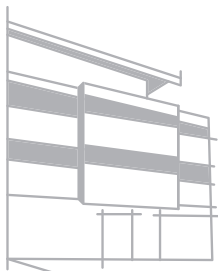
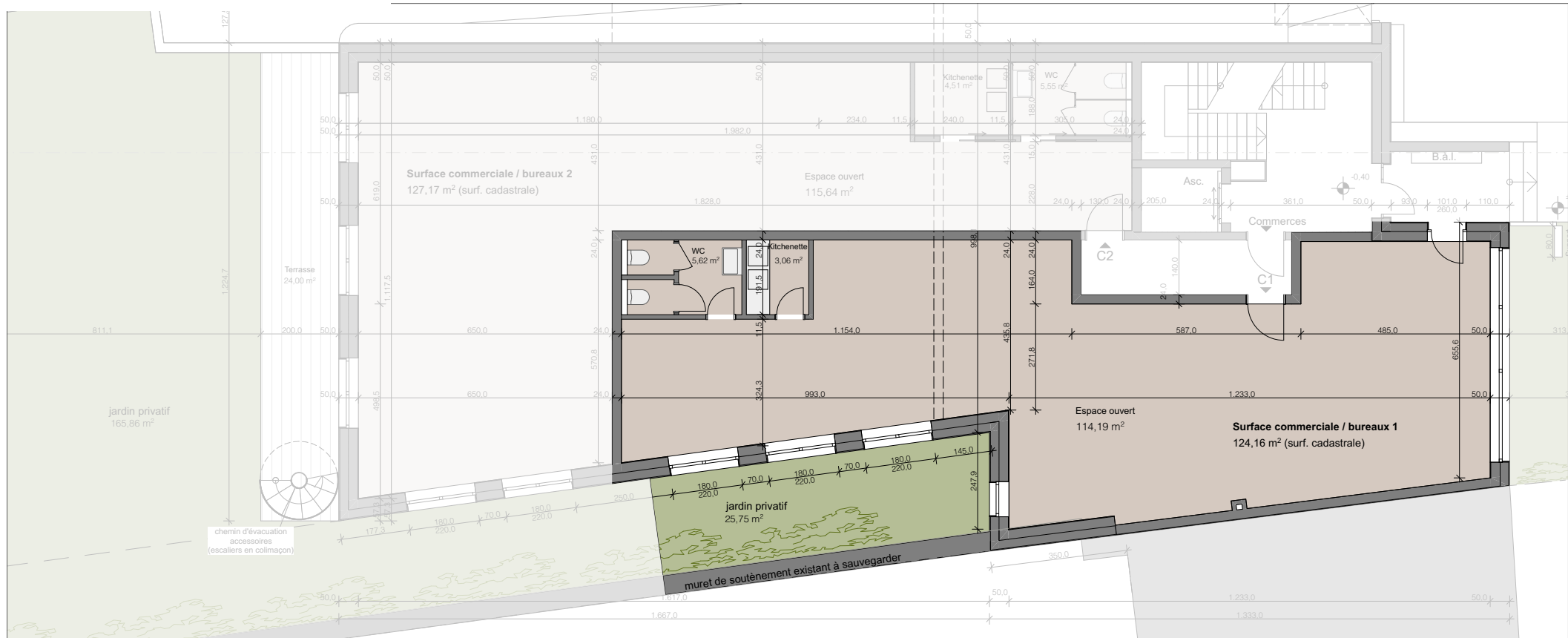
(hors balcons/terrasse et cave)

Espace ouvert 114,19 m²

Kitchenette 3,06 m²

Sanitaires 5,62 m²

Jardin privatif 25,75 m²



IMMEUBLE RESIDENTIEL "Serinus"

20, avenue Dr. Gaasch L-4818 Rodange

TOM SIMON ARCHITECTES

08.06.2021 | Echelle 1/100

17, allée Louis Ackermann | L-1897 Kockelscheuer
T: +352 26 97 62 77 | E: +352 26 97 62 78 | P: info@tsa.lu | W: www.tsa.lu


CKM PROMOTION
IMMOBILIERE

Promotions Immobilières

 **promotions**