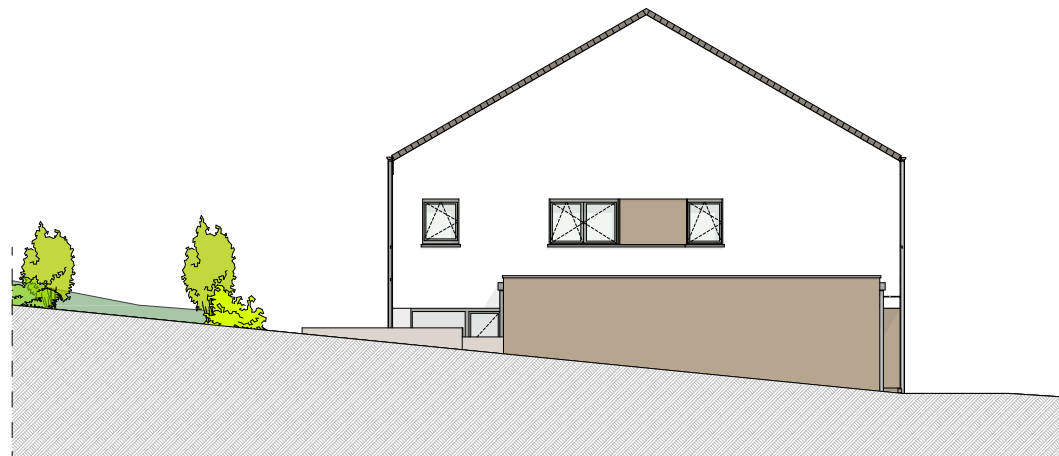
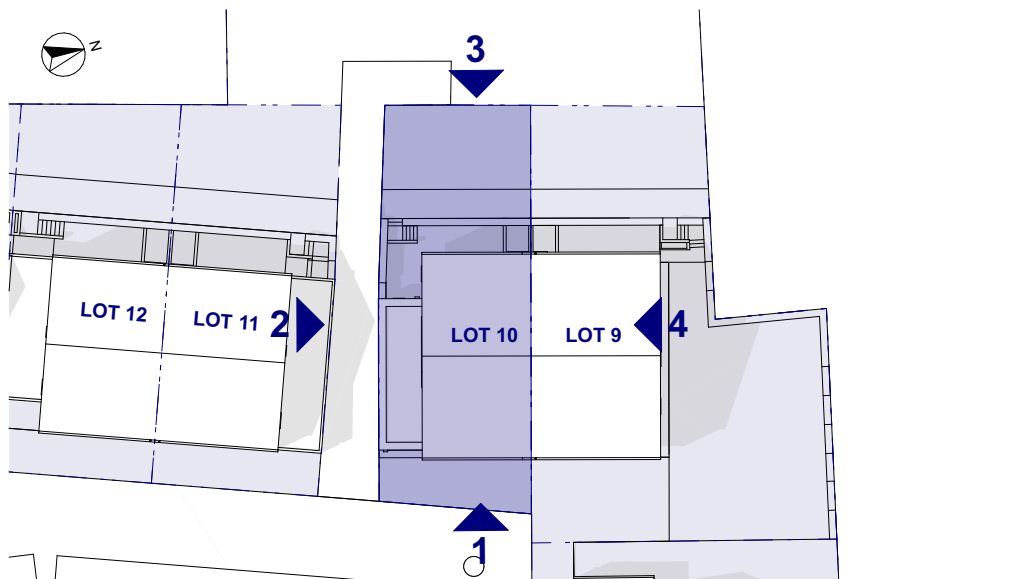


FACADE 1 - ECH 1:150



FACADE 2 - ECH 1:150

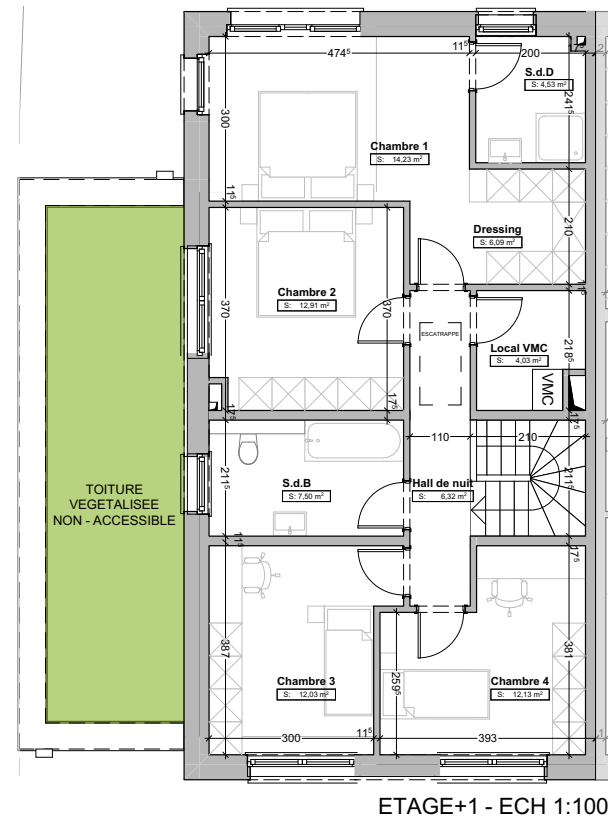
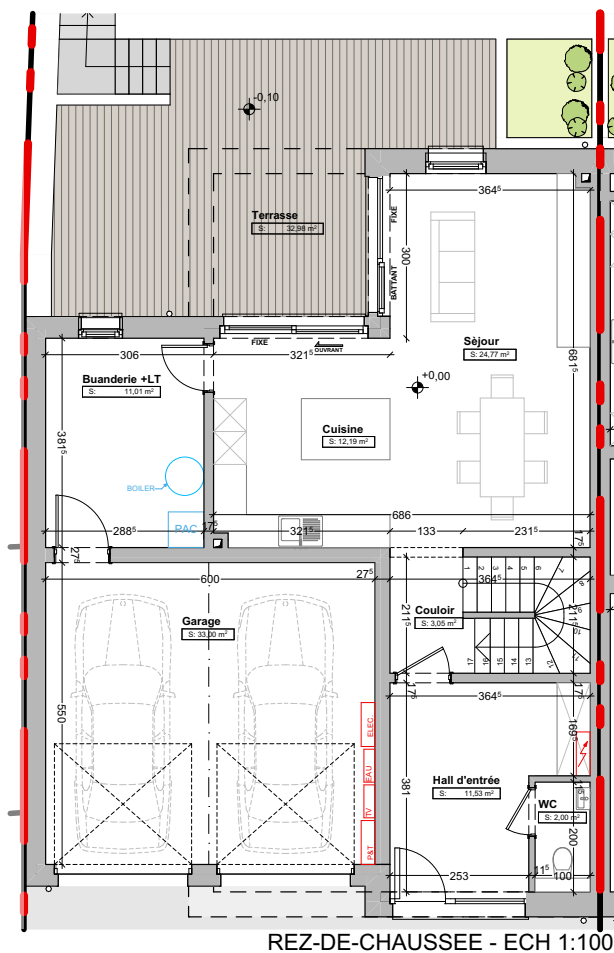


IMPLANTATION



FACADE 3 - ECH 1:150

PROJET REALISE PAR



REZ-DE-CHAUSSEE

Surface habitable	53,54m²
Séjour	24,77m ²
Buanderie + LT	11,01m ²
WC	2,00m ²
Cuisine	12,19m ²
Hall	11,53m ²
Couloir	3,05m ²

Terrasse	32,98m²
-----------------	---------------------------

ETAGE+1

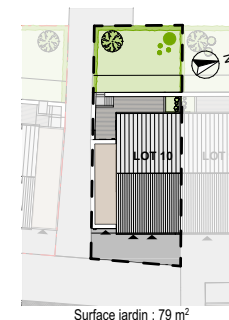
Surface habitable	75,74m²
Chambre 1	14,23m ²
Chambre 2	12,91m ²
Chambre 3	12,03m ²
Chambre 4	12,13m ²
Dressing	6,09m ²
Hall de nuit	6,32m ²
S.d.B	7,50m ²
S.d.D	4,53m ²
Local VMC	4,03m ²

Garage

2 emplacements

Terrain

2a 89ca



PROJET REALISE PAR