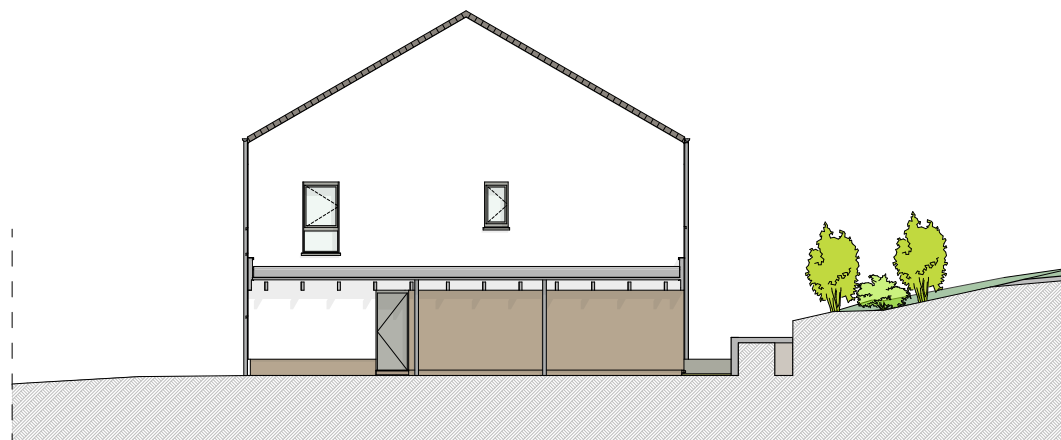
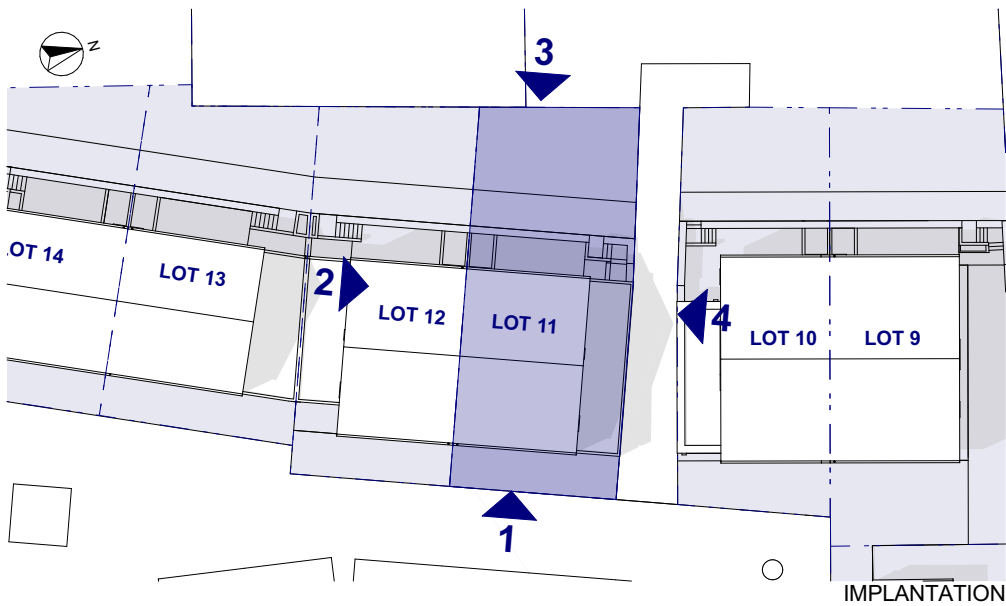




FACADE 1 - ECH 1:150



FACADE 4 - ECH 1:150

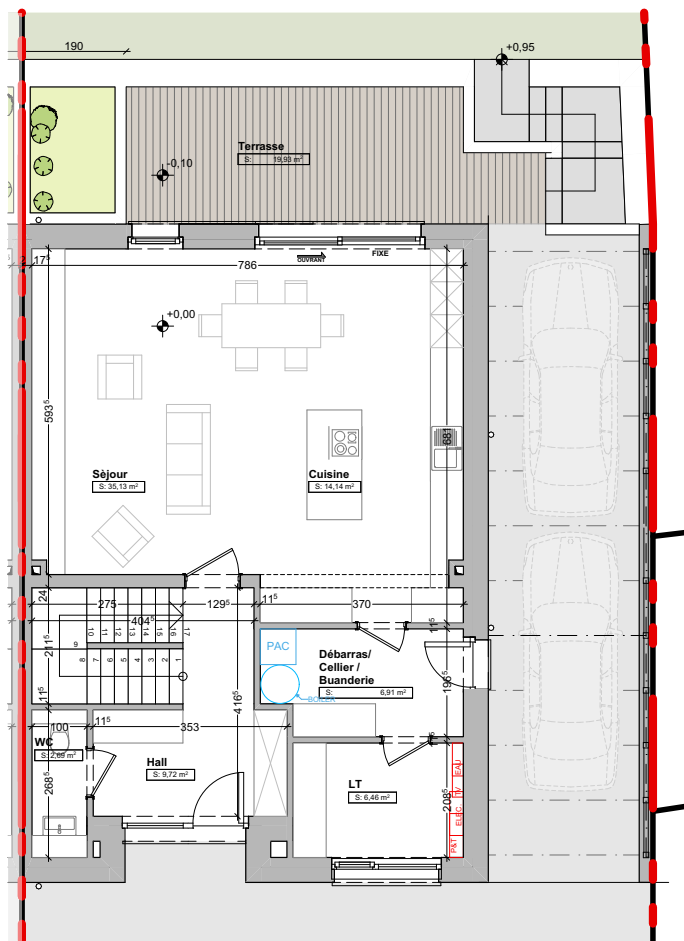


IMPLANTATION

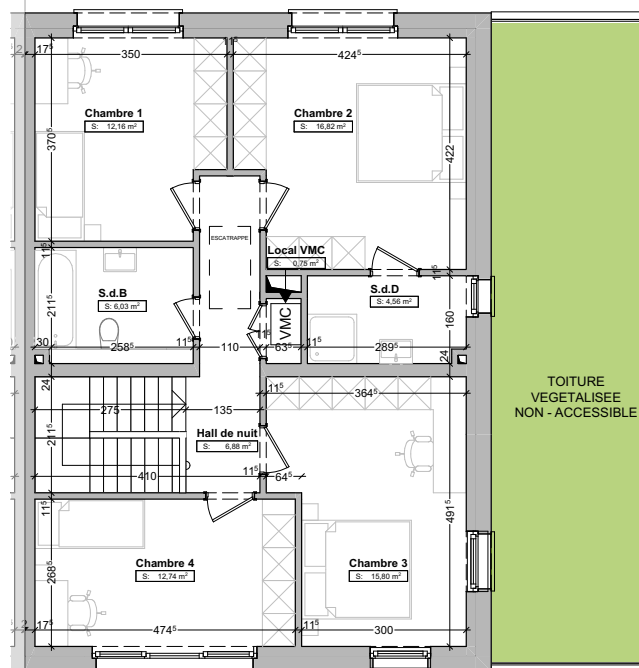


FACADE 3 - ECH 1:150

PROJET REALISE PAR



REZ-DE-CHAUSSEE - ECH 1:100



ETAGE+1 - ECH 1:100

REZ-DE-CHAUSSEE

Surface habitable	61,68m²
Séjour	35,13m ²
LT	6,46m ²
Débarras / Cellier / Buanderie	6,91m ²
WC	2,69m ²
Cuisine	14,14m ²
Hall	9,72m ²

Terrasse 19,93m²

ETAGE+1

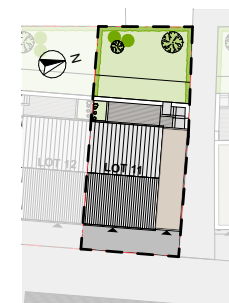
Surface habitable	74,99m²
Chambre 1	12,16m ²
Chambre 2	16,82m ²
Chambre 3	15,80m ²
Chambre 4	12,74m ²
Hall de nuit	6,88m ²
S.d.B	6,03m ²
S.d.D	4,56m ²
Local VMC	0,75m ²

Car-port

2 emplacements

Terrain

3a 03ca



Surface jardin : 95 m²

PROJET REALISE PAR