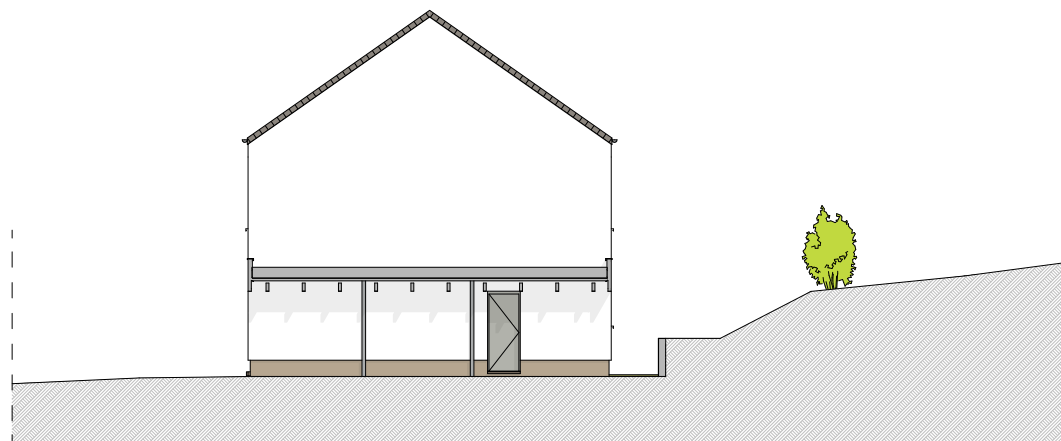
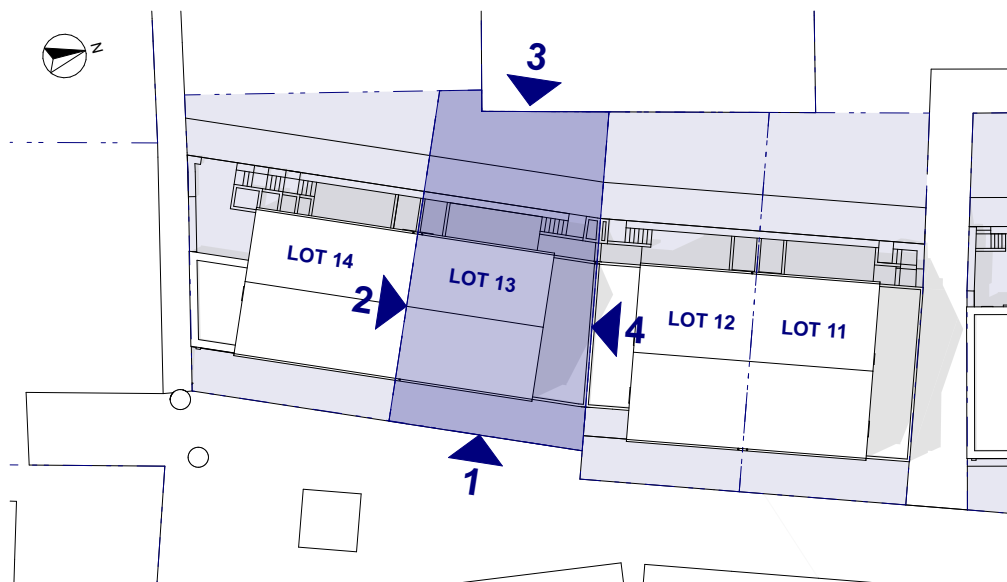


FACADE 1 - ECH 1:150



FACADE 4 - ECH 1:150

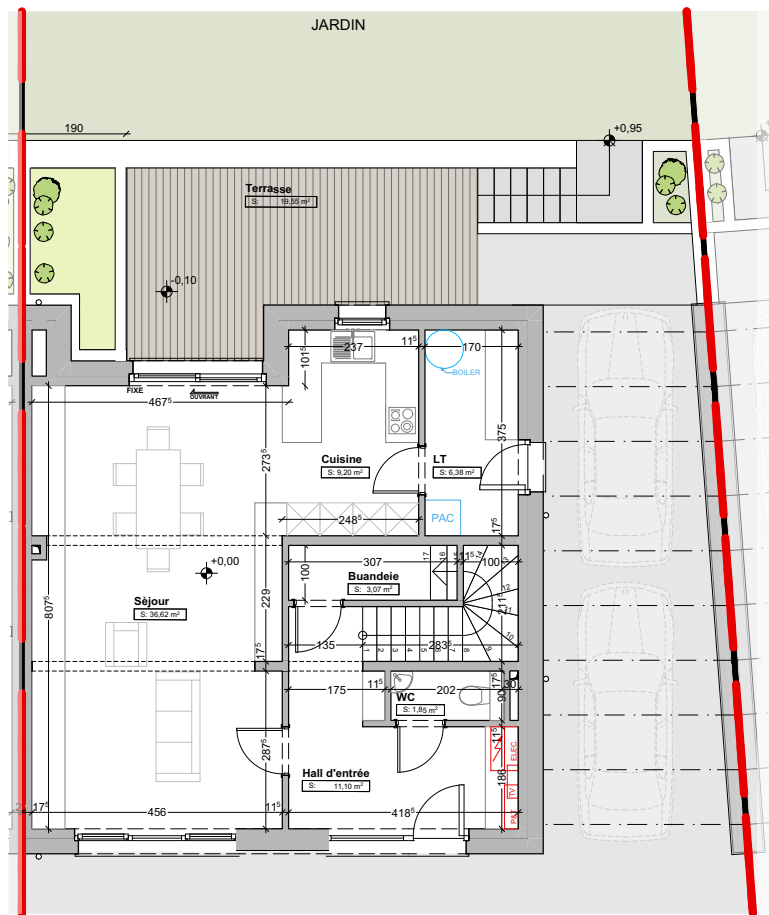


IMPLANTATION

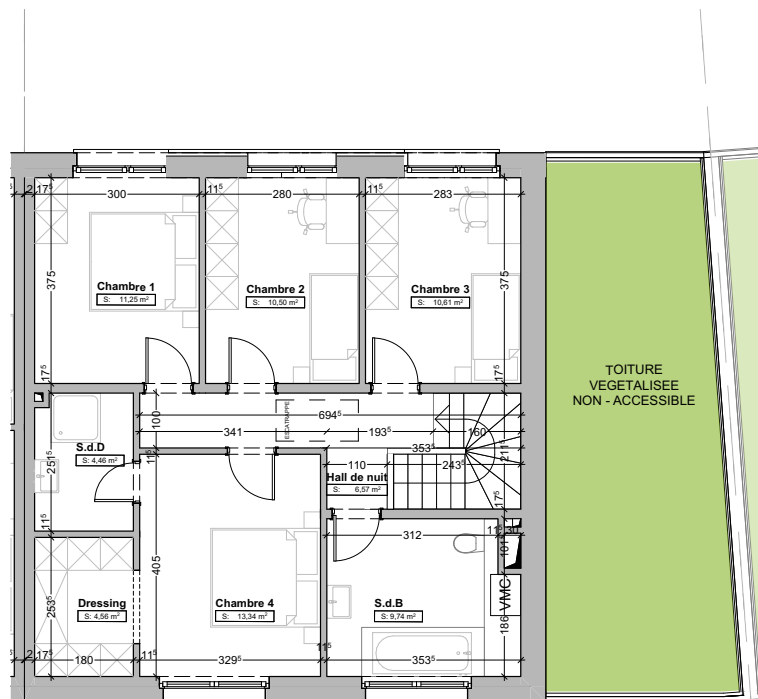


FACADE 3 - ECH 1:150

PROJET REALISE PAR



REZ-DE-CHAUSSEE - ECH 1:100



ETAGE+1 - ECH 1:100

REZ-DE-CHAUSSEE

Surface habitable	58,77m²
Séjour	36,62m ²
LT	6,38m ²
Buanderie	3,07m ²
WC	1,85m ²
Cuisine	9,20m ²
Hall	11,10m ²

Terrasse	22,07m²
-----------------	---------------------------

ETAGE+1

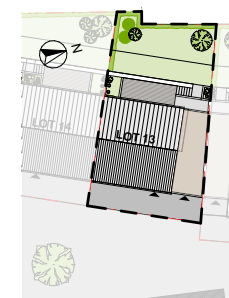
Surface habitable	70,93m²
Chambre 1	11,25m ²
Chambre 2	10,50m ²
Chambre 3	10,51m ²
Chambre 4	13,34m ²
Dressing	4,56m ²
Hall de nuit	6,57m ²
S.d.B	9,74m ²
S.d.D	4,46m ²

Car-port

2 emplacements

Terrain

2a 88ca



Surface jardin : 81 m²

PROJET REALISE PAR