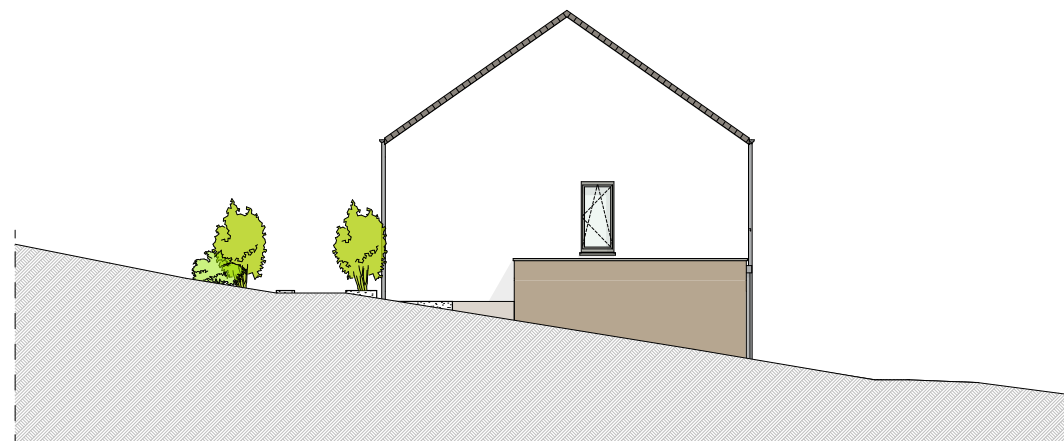
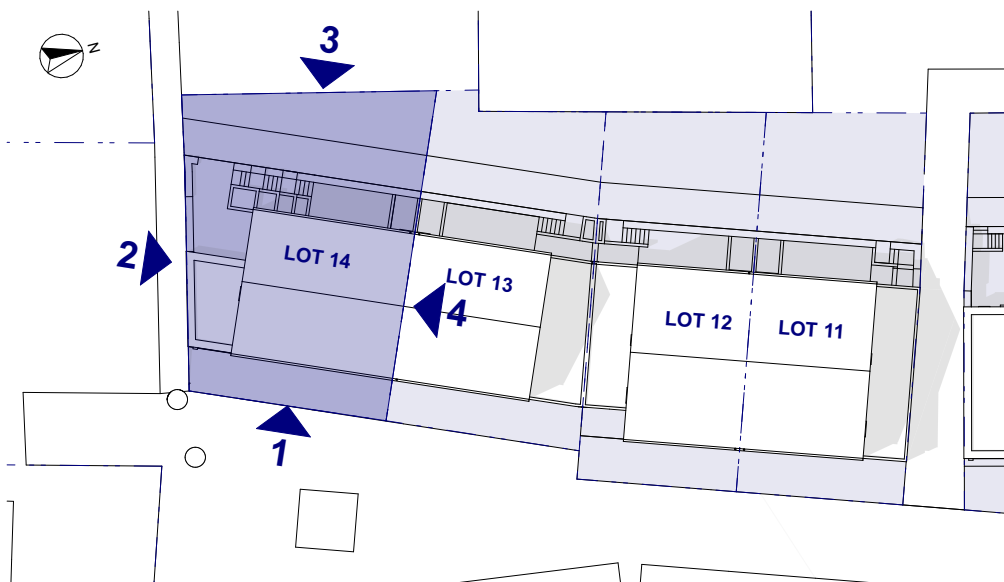




FACADE 1 - ECH 1:150



FACADE 2 - ECH 1:150

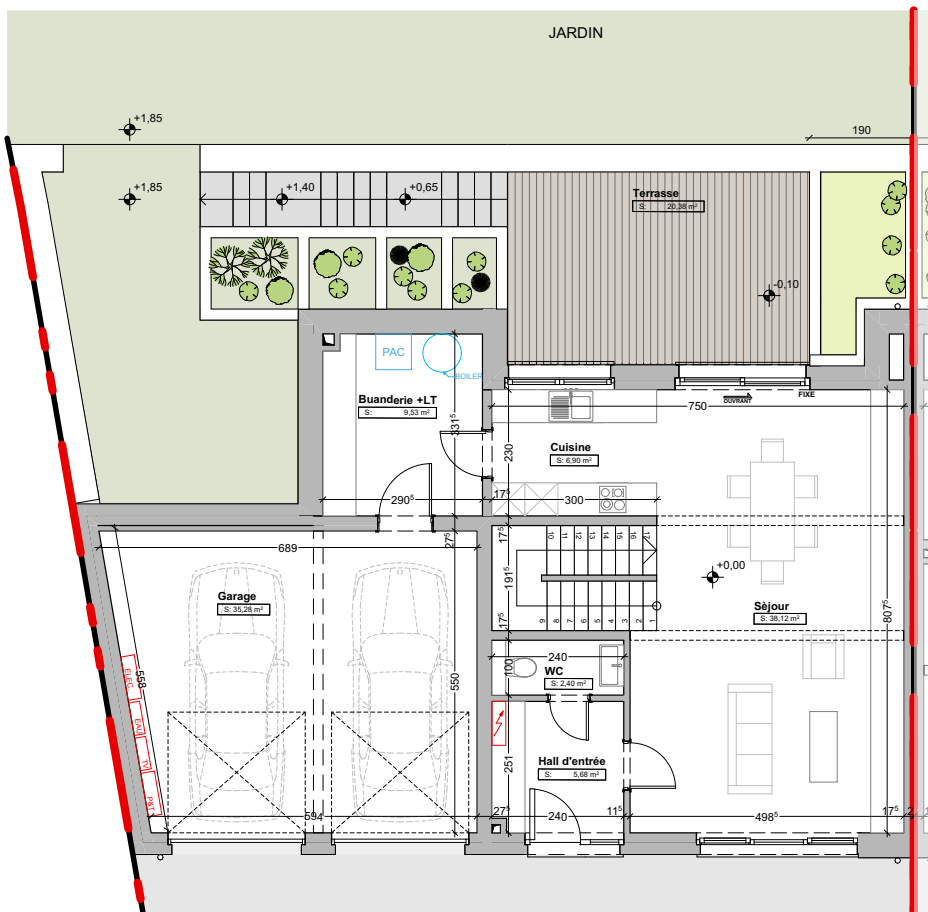


IMPLANTATION

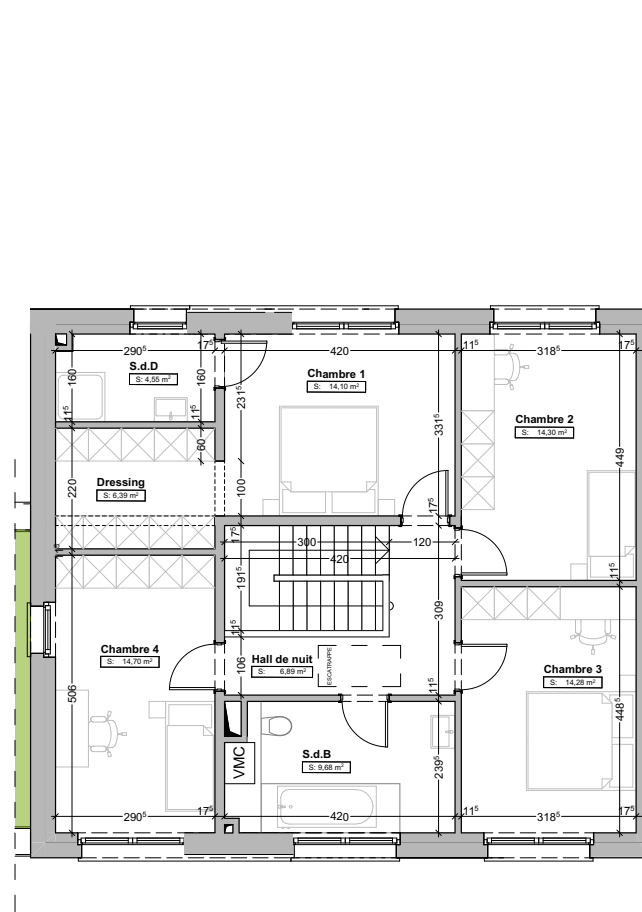


FACADE 3 - ECH 1:150

PROJET REALISE PAR



REZ-DE-CHAUSSEE - ECH 1:100



ETAGE+1 - ECH 1:100

REZ-DE-CHAUSSEE

Surface habitable	53,10m²
Séjour	38,12m ²
Buanderie + LT	9,53m ²
WC	2,40m ²
Cuisine	6,90m ²
Hall	5,68m ²

Terrasse	44,34m²
-----------------	---------------------------

ETAGE+1

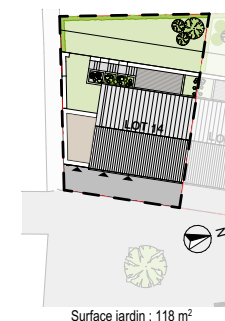
Surface habitable	84,89m²
Chambre 1	14,10m ²
Chambre 2	14,30m ²
Chambre 3	14,28m ²
Chambre 4	14,70m ²
Dressing	6,39m ²
Hall de nuit	6,89m ²
S.d.B	9,68m ²
S.d.D	4,55m ²

Garage

2 emplacements

Terrain

3a 36ca



PROJET REALISE PAR