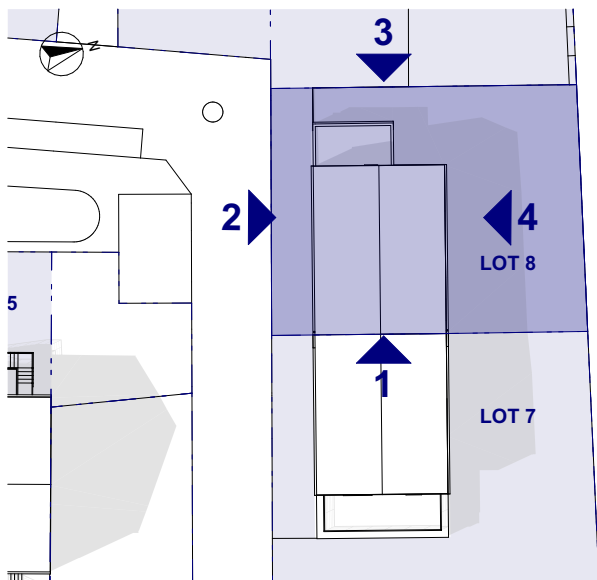




FACADE 3 - ECH 1:150



FACADE 2 - ECH 1:150

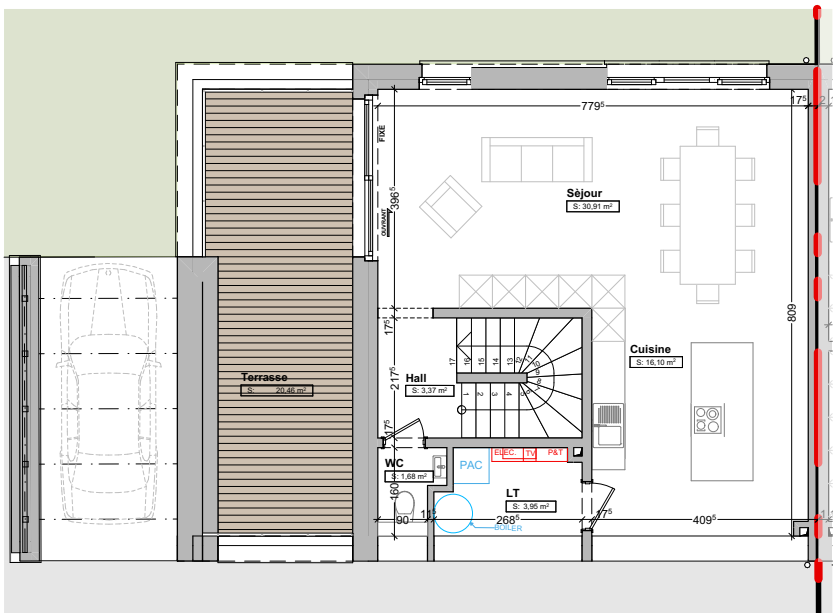


IMPLANTATION

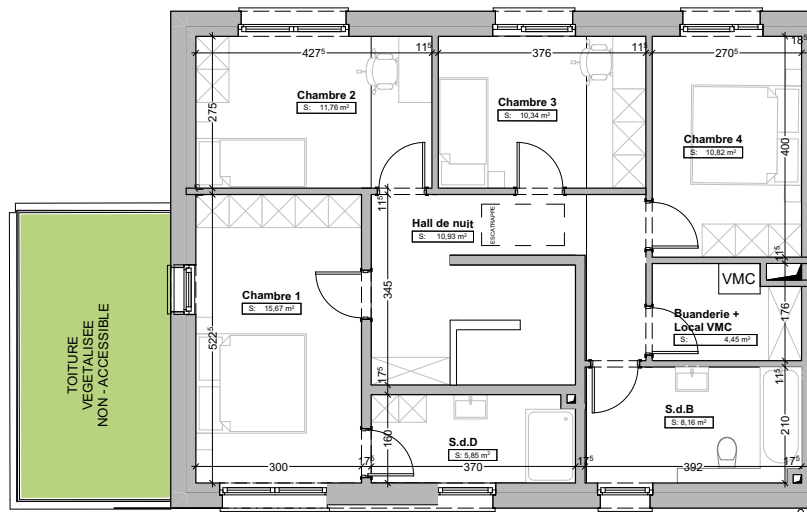


FACADE 4 - ECH 1:150

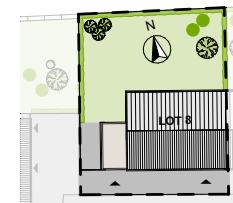
PROJET REALISE PAR



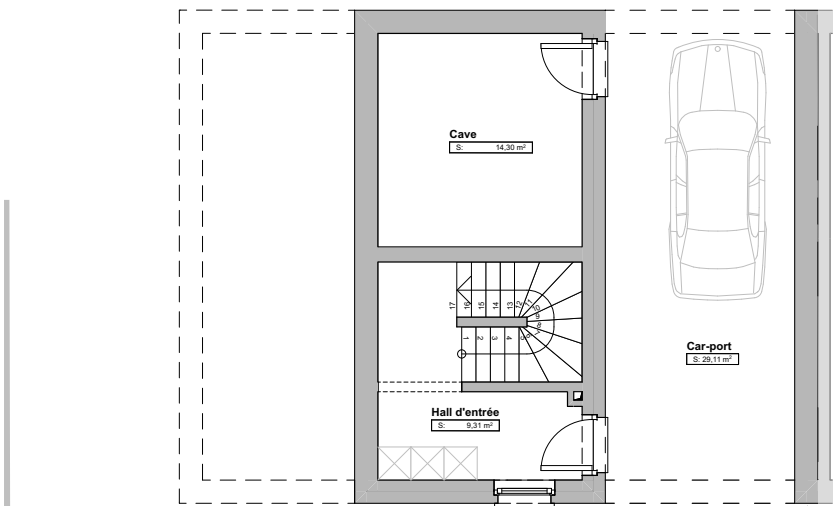
REZ-DE-CHAUSSEE - ECH 1:100



ETAGE+1 - ECH 1:100



Surface jardin : 179 m²



SOUS-SOL - ECH 1:100

SOUS-SOL

REZ-DE-CHAUSSEE

ETAGE+1

SOUS-SOL		REZ-DE-CHAUSSEE		ETAGE+1	
Surface habitable	9,31m²	Surface habitable	52,06m²	Surface habitable	73,53m²
Hall d'entrée	9,31m ²	Séjour	30,91m ²	Chambre 1	15,67m ²
Cave	14,30m ²	LT	3,95m ²	Chambre 2	11,76m ²
		WC	1,68m ²	Chambre 3	10,34m ²
		Cuisine	16,10m ²	Chambre 4	10,82m ²
		Hall	3,37m ²	Hall de nuit	10,93m ²
				S.d.B	8,16m ²
				S.d.D	5,85m ²
Car-port	1 emplacement	Car-port	1 emplacement	Local VMC + Buanderie	4,45m ²

Terrasse 20,46m² **Terrain** 3a 64ca