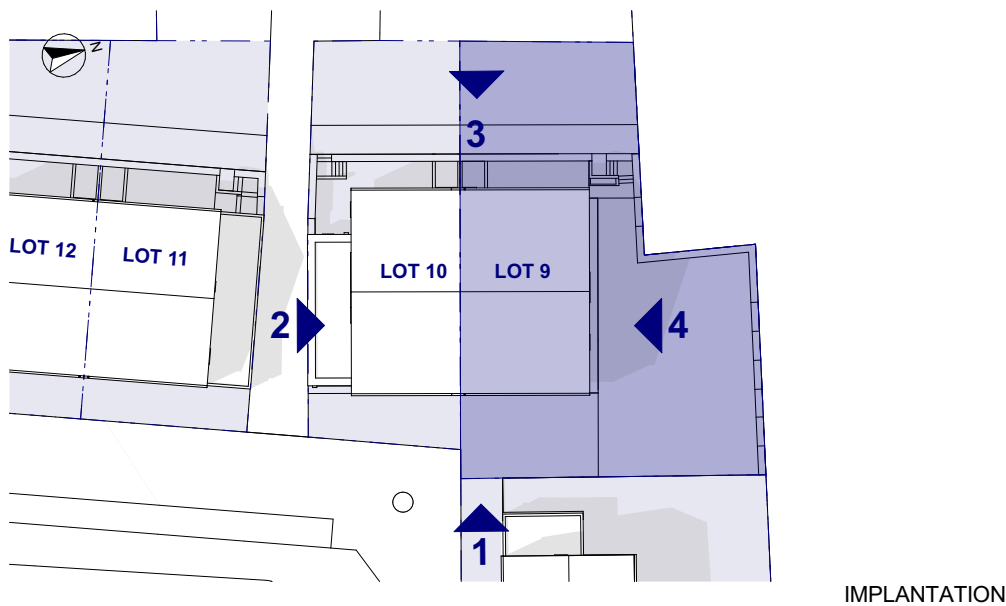




FACADE 1 - ECH 1:150



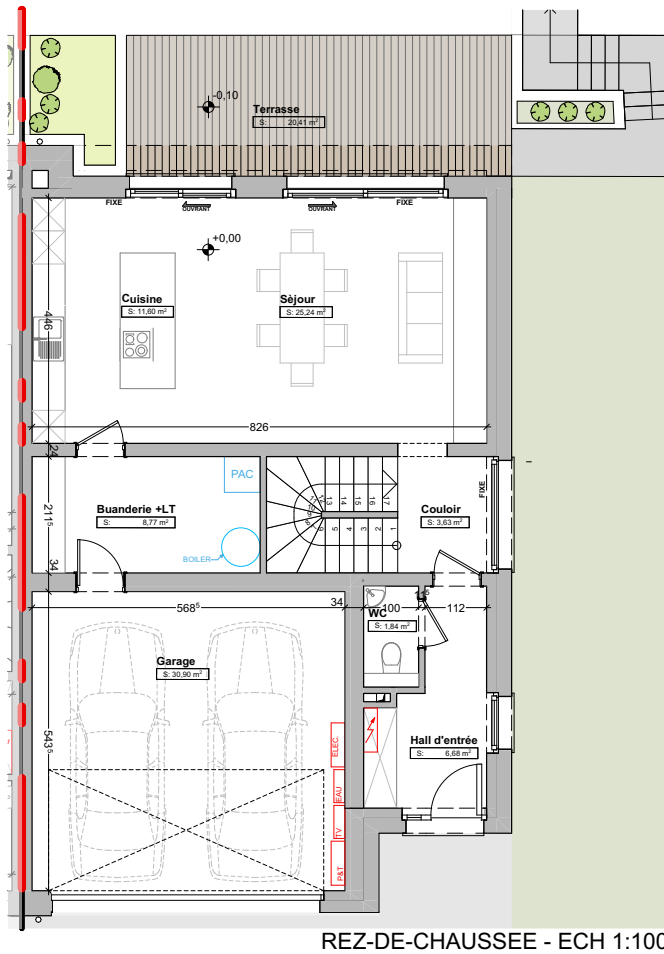
FACADE 4 - ECH 1:150



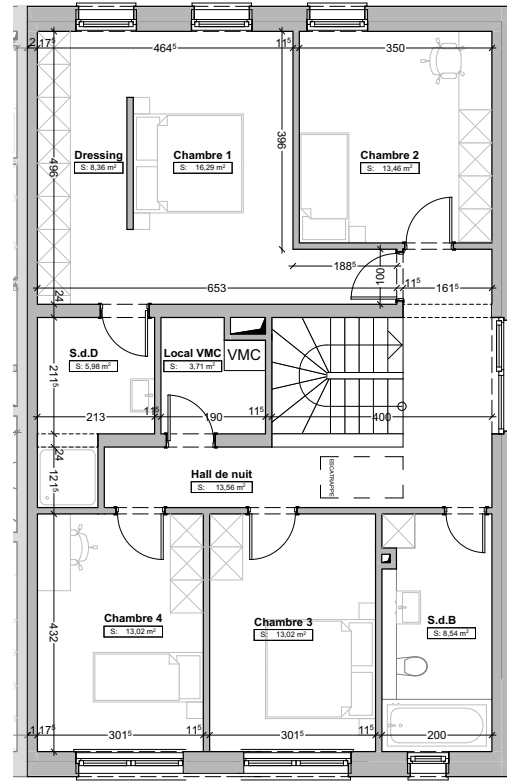
IMPLANTATION



FACADE 3 - ECH 1:150



REZ-DE-CHAUSSEE - ECH 1:100



ETAGE+1 - ECH 1:100

**REZ-DE-CHAUSSEE**

<b>Surface habitable</b>	<b>48,99m<sup>2</sup></b>
Séjour	25,24m <sup>2</sup>
Buanderie + LT	8,77m <sup>2</sup>
WC	1,84m <sup>2</sup>
Cuisine	11,60m <sup>2</sup>
Hall	6,68m <sup>2</sup>
Coulloir	3,63m <sup>2</sup>

<b>Terrasse</b>	<b>20,41m<sup>2</sup></b>
-----------------	---------------------------

**ETAGE+1**

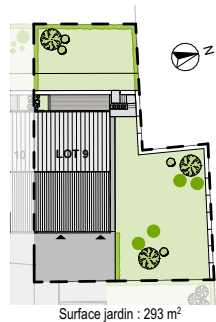
<b>Surface habitable</b>	<b>92,23m<sup>2</sup></b>
Chambre 1	16,29m <sup>2</sup>
Chambre 2	13,46m <sup>2</sup>
Chambre 3	13,02m <sup>2</sup>
Chambre 4	13,02m <sup>2</sup>
Dressing	8,36m <sup>2</sup>
Hall de nuit	13,56m <sup>2</sup>
S.d.B	8,54m <sup>2</sup>
S.d.D	5,98m <sup>2</sup>
Local VMC	3,71m <sup>2</sup>

**Garage**

**2 emplacements**

**Terrain**

**5a 02ca**



PROJET REALISE PAR